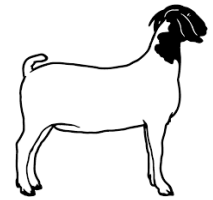


# Department N



## JUNIOR GOAT SHOWMANSHIP CONTEST

- 1) The **Junior Showmanship Contest** is open to all junior exhibitors who participate in the **Junior Goat Show**.
- 2) Those exhibitors under 9 years of age MAY enter the Novice/Participation class if they desire. These exhibitors will not be placed and will all receive the same premium.
- 3) Basis for awards will be 25% fitting and 75% showmanship.
- 4) To be held September 4 @ 1:00 pm

### PREMIUM SCHEDULE

CLASS	1 <sup>st</sup>	2 <sup>nd</sup>	3 <sup>rd</sup>	4 <sup>th</sup>	5 <sup>th</sup>	6 <sup>th</sup>	7 <sup>th</sup>	8 <sup>th</sup>
N4 Peewee (6 & Under)	\$10	\$10	\$10	\$10	\$10	\$10	\$10	\$10
N5 Cloverbud (7-8)	\$25	\$22	\$20	\$18	\$16	\$14	\$12	\$10
N6 Junior (9 – 11)	\$25	\$22	\$20	\$18	\$16	\$14	\$12	\$10
N7 Intermediate (12- 14)	\$25	\$22	\$20	\$18	\$16	\$14	\$12	\$10
N8 Senior (15 – 18)	\$25	\$22	\$20	\$18	\$16	\$14	\$12	\$10
N9 Senior Plus (19 -21)	\$25	\$22	\$20	\$18	\$16	\$14	\$12	\$10

N10 – Intermediate Champion – Rosette

N11 – Reserve Intermediate Champion – Rosette

N12 – Senior Champion – Rosette

N13 – Reserve Champion – Rosette

## JUNIOR MARKET GOAT SHOW

### Entries and Awards (Rules and Regulations)

*Goats will be accepted from Alexander, Burke, Caldwell, Catawba, Cleveland, Gaston, Iredell, Lincoln, McDowell, Rowan & Rutherford Counties Only, Or active members of the Catawba Valley Youth Showmanship circuit.*

- 1) The Junior Goat Show will be held on Monday, September 4, **immediately after** the Junior Market Goat Showmanship Contest Entries must be in place by 10:30 AM.
- 2) Exhibitors must be residents of counties listed or an active member of the Catawba Valley Youth Showmanship Circuit.
- 3) Exhibitors must have trained and fitted their animals for at least 60 days before the show but ownership is not required.
- 4) Goats shown must be wethers or does (NO BUCKS).
- 5) Goats should be shown at halter. Major fitting should be done prior to arrival at Fair.
- 6) Goats will be shown as individuals. Each exhibitor is limited to two entries.
- 7) If a junior has more than one goat in a class, the other goat must be shown by a junior approved by the Barn Superintendent.
- 8) Class size will be determined after weigh in and classes will be broken by weight at the discretion of the Show Superintendent.
- 9) Livestock may be inspected prior to unloading. Entries are due by Wednesday, August 23, 2023.

### PREMIUM SCHEDULE

1 <sup>ST</sup>	2 <sup>nd</sup>	3 <sup>rd</sup>	4 <sup>th</sup>	5 <sup>th</sup>	6 <sup>th</sup>	7 <sup>th</sup>	8 <sup>th</sup>
\$30	\$25	\$20	\$15	\$15	\$15	\$15	\$15

(N100A-N100D, as necessary or more than 6 head entered)

Grand Champion Market Goat - \$25 and Rosette

Reserve Champion Market Goat - \$20 and Rosette